

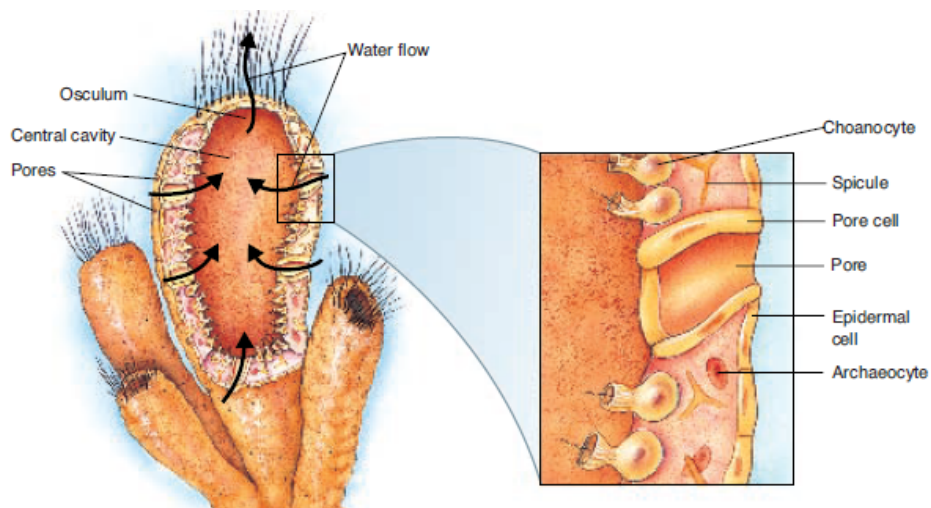
The Animal Kingdom

The Invertebrates

There are 8 animal phyla that do not contain a backbone.

<http://shapeoflife.org/video/sponges-origins>

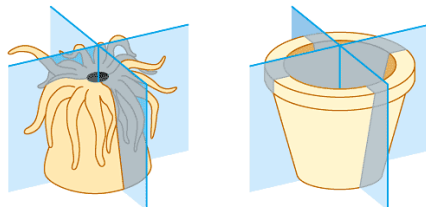
1. Porifera
 - Sponges
 - Sessile
 - Lack all major body systems
 - Filter feeders/rely on diffusion for most processes



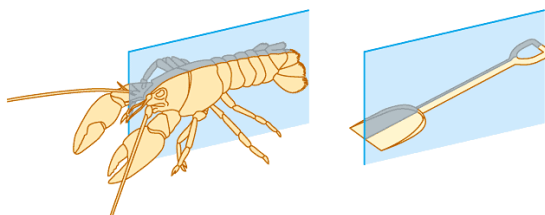
Lesson 2 Animal Kingdom Notes Part 1.notebook

2. Cnidaria ex. jellyfish, hydra

- Have stinging cells called cnidocytes on their tentacles (nematocysts) which are arranged around their mouth
- Have 2 body types...polyp and medusa
- have radial symmetry

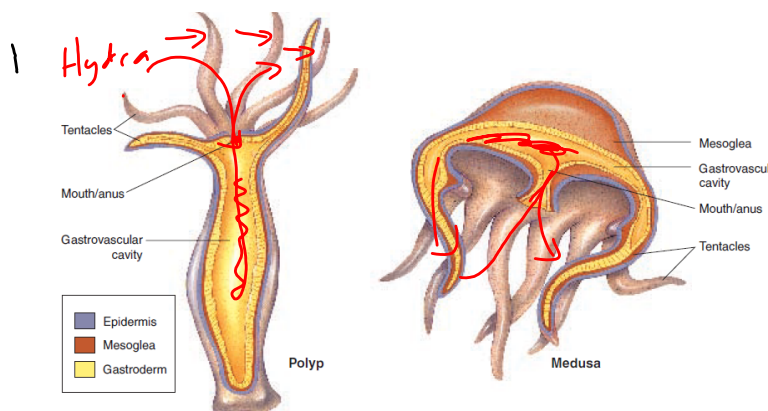


(a) Radial symmetry



(b) Bilateral symmetry

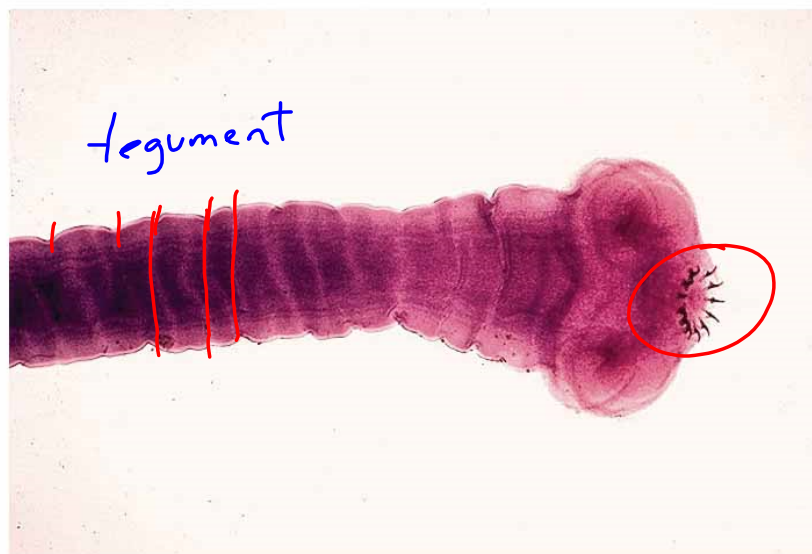
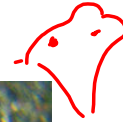
Copyright © Pearson Education, Inc., publishing as Benjamin Cummings.



Lesson 2 Animal Kingdom Notes Part 1.notebook

3. Platyhelminthes ex. planaria, tapeworms

- Flatworms...a lot are parasitic, some are free-living
- First to have 3 germ (cell) layers, bilateral symmetry and cephalization
- Only 1 opening to the digestive tract (sac-like gut)
- do have simple nervous, circulatory, respiratory and excretory systems *acoelmates*
- they are acoelomates (~~leaving out later~~)



4. Nematoda ex. Trichinella, Ascaris

- Roundworms, no segments
- First group to have a mouth and an anus
- Move in a snake like manner - like an S
- Have a pseudocoelum
- Most are free living but some are parasitic
- Have all of the major body systems

